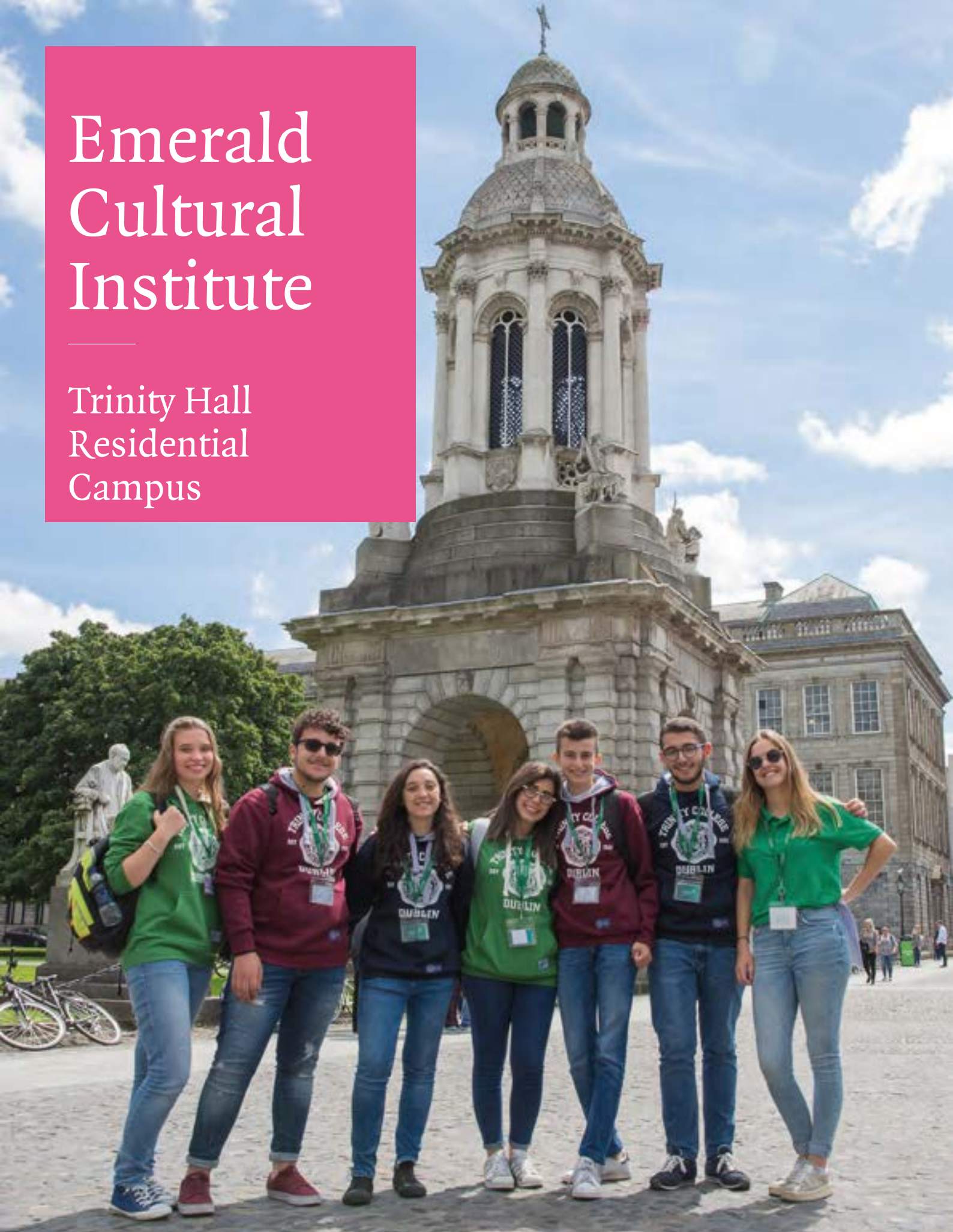


Emerald Cultural Institute

Trinity Hall
Residential
Campus



Location

Trinity Hall Residential Campus Dublin – Emerald Cultural Institute

Trinity Halls of Residence

Trinity Hall,
Dartry Road,
Dartry,
Dublin 6



Trinity Hall is an official extramural residence of Trinity College. The residence is located on Dartry Road, in an exclusive residential district on the south side of Dublin City.

The Residence is within easy access of the city centre and just a stone's throw from the Emerald headquarters at Palmerston Park. The beautiful Victorian park also borders the Trinity Hall grounds.

Coming from the Airport:

The taxi journey from Dublin Airport to Trinity Hall takes less than 30 minutes.

Coming from Dublin city centre:

Take the green Luas line (which leaves from the top of Grafton Street) to Milltown. At Milltown, turn right as you leave the station and then immediately left on Temple Road. Continue around the corner to the main entrance of Hall. Alternatively, the 140 bus from the city O'Connell Street stops at Palmerstown Park (terminus).



Trinity Hall Residence

The Trinity Hall residential campus consists of beautiful, classically designed and modern buildings, which accommodate over 1000 university students.

Facilities include TV lounges, quiet reading space, game areas, sports facilities, an on-site convenience shop and a spacious canteen.

Visitors to Trinity Hall will enjoy its proximity to the main college campus and tranquillity of being outside the hustle and bustle of the city centre.

The residence is also close to a wide range of amenities including supermarkets, delicatessens, shops, cinemas, cafés, restaurants and a pharmacy. Dublin city centre is a short bus or Luas journey away.



At a glance

Single and twin en-suite bedrooms, grouped in apartments for six people

Study facilities in each bedroom

Fully-fitted kitchen and living areas

WiFi available

Secure key card access to each apartment and bedroom

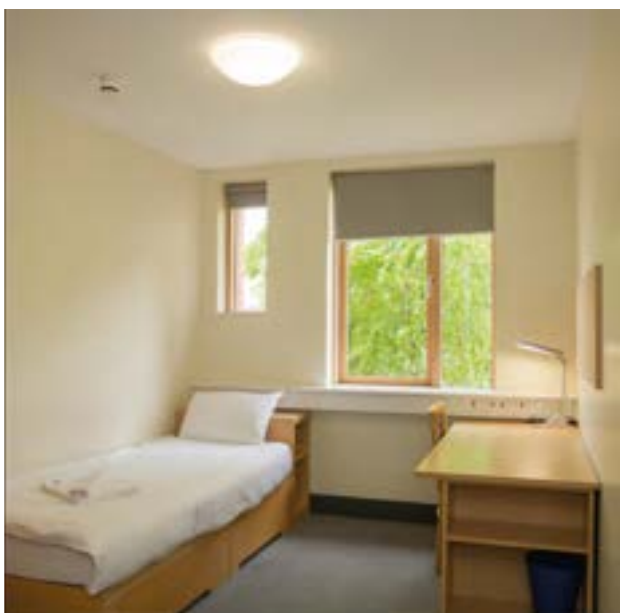
Spacious canteen and dining area

A gated complex with 24 hour on-site security services and CCTV

Central social and recreational facilities (including TV lounges, quiet reading space, games areas)

On-site convenience shop

On-site coin operated self-service laundry facilities 24 hour supervision by Emerald residential managers and supervisors





Trinity Hall Facilities

Games area with foosball and snooker tables

Sports hall with squash court, basketball, badminton facilities and changing rooms

Relaxation area

Quiet study area

Reflective room for those who wish to pray, meditate, or take some quiet time for themselves

TV room with TV, video and DVD

Mezzanine carpeted space for yoga/pilates



Trinity Hall Cafeteria

A modern restaurant offers our students a variety of hot and cold meals daily. Students can choose from a broad range of excellent food options. Breakfast and dinner are served in the residence, while students will enjoy lunch in the school where their lessons take place.

Laundry Facilities and Linen

There is a launderette on site with washing machines and dryers. It costs €5 per wash and approximately €2 to dry clothes. Washing detergents are not included but can be purchased in the convenience shop (individual doses also available). Linen is changed once a week and towels are changed twice a week.



Students staying in Trinity Hall choose from the following programmes:

Trinity Walton STEM Programme (14-17)

Summer courses for juniors at the Emerald Cultural Institute are lively and enjoyable. We combine expert English language teaching with a daily programme of fun extra-curricular activities and stimulating cultural visits. We also offer a unique STEM Programme, in collaboration with the Trinity Walton Club in Trinity College, for students with an interest in the subjects of Science, Technology, Engineering and Maths.



Young Adult Programme (16-19)

Our young adult programme is designed for students aged 16-19 who wish to spend their time in Ireland with other international teenagers of a similar age group. We offer an intensive English language programme. It is an Intensive programme of engaging lessons combined with an interesting activity programme themed “Discovering Dublin”. Specialised workshops are conducted by university professors and guest speakers who are expert in their fields. Lesson content includes Leadership & Development, English for the Workplace and Irish Life & Culture.

Intensive Programme (14-17)

The intensive course is designed for students who wish to spend more time in the classroom perfecting their language skills, while at the same time joining our varied social programme. The intensive afternoon programme offers students the opportunity to further develop their English-language skills. Two additional 2.5 classes are held on either Monday and Wednesdays or Tuesdays and Thursdays. The final schedule will be communicated prior to arrival.

Course	Course Code	Age	Tuition	Activities	Period
STEM Programme	SUM 9R	14-17	English Programme & STEM sessions	Wide range of different activities	July
Young Adult Programme	SUM 8R	16-19	English Programme & workshops	Free time/Discover Dublin visits; Workshops	July, August
Multi-activity Programme	SUM 1R	11-17	English Programme	Wide range of different activities	July, August
Intensive Course	SUM 7R	14-17	English Programme & additional afternoon lessons	Wide range of different activities	July, August

Multi-activity Programme (11-17)

This programme is ideal for students who want to learn English and enjoy an interesting and varied social programme, including visits to popular cultural attractions, sports and tournaments, dance, music, drama and arts & crafts.

General and Practical Information



Medical Information

All students studying in Ireland should obtain appropriate medical insurance in their own country before departure. Students travelling from EU countries should bring their European Health Insurance with them. Non-EU students should travel with a copy of their insurance policy.

Our on-site time will be happy to make arrangements for students who require medical attention. Students should cover any transport costs incurred for medical visits.

Belgrave Clinic – 014975666

Cambridge Health Centre – 014973917

Out of hours medical services, available by phoning DUBDOC (014545607) or LUKE-DOC (01406 5158)

24 hour on-call doctor Medi Serve – 014539333

Beechwood Dental – 014967526

Roches Pharmacy, Upper Rathmines Road

Deposits and Damages

A deposit of €50 is charged to all students and is payable on arrival. The deposit will be refunded provided that no damage has been caused. In the event that a student causes damage to property we will deduct the cost of damages from the total amount. The Institute reserves the right to recover the cost for exceptional cleaning.

Smoking/Alcohol/Illegal Substances

Smoking is prohibited in all apartments and campus buildings. Students caught smoking in the apartments or campus buildings can be subject to expulsion for breaching the fire and safety regulations of the campus.

The minimum age for buying and consuming alcohol in Ireland is 18 years and many public houses allow over-21s only. Any student found in possession of alcohol, drugs or other illegal substances may be asked to leave the school.

Health and Safety

As part of their welcome orientation, students and group leaders are required to attend a briefing on the safety regulations. This briefing includes an introduction to life on the campus, security of personal property and fire safety. Attendance is compulsory.

Group leaders and students will also receive details of first aid procedures, which they should follow in the event of an accident.

Key Cards

Electronic key cards are provided to each student. These cards will be required to access apartments and may be used to lock rooms. Students will be charged for the replacement of lost or broken keys.

Emerald Student Identity Card

All students are issued with an Emerald Cultural Institute student ID card on arrival. Students should carry their student ID with them at all times and may be asked to produce the card by security or residence staff.

General and Practical Information



Student Supervision

Our team of residential managers, supervisors and activity staff will be on hand to care for the welfare of students. Students are introduced to this team during orientation. Staff are there to ensure that every aspect of each student's stay with us is enjoyable.

Security and Assistance on Campus

Security personnel monitor the campus on a 24 hour basis. During office hours students and group leaders can go to the Emerald Cultural Institute office and our centre manager or residential team will be happy to assist you. Between the hours of 23:00 and 08:00, students can call our 24 hour number and our duty supervisors will address the situation.

Cleaning

Apartments are given one full clean with a change of linen and one mini clean per week. Apartments are fully-serviced between occupancies.

Discipline and Breach of Conduct

If a student's behaviour or conduct is unsatisfactory or in breach of school regulations, he or she will be subject to the Institute's disciplinary procedure. A serious breach of conduct may result in expulsion.



Trinity Hall Residential Campus

Trinity Hall,
Dartry Road,
Dublin 6,
Ireland

24-hour emergency number:

+353-(0)86-8112047

Emerald Cultural Institute

10 Palmerston Park,
Rathgar, Dublin 6, Ireland

t: +353 1 4973361

f: +353 1 4975008

e: emerald@eci.ie

www.eci.ie



emerald[®]
cultural institute

Experience Tradition, Embrace Innovation