



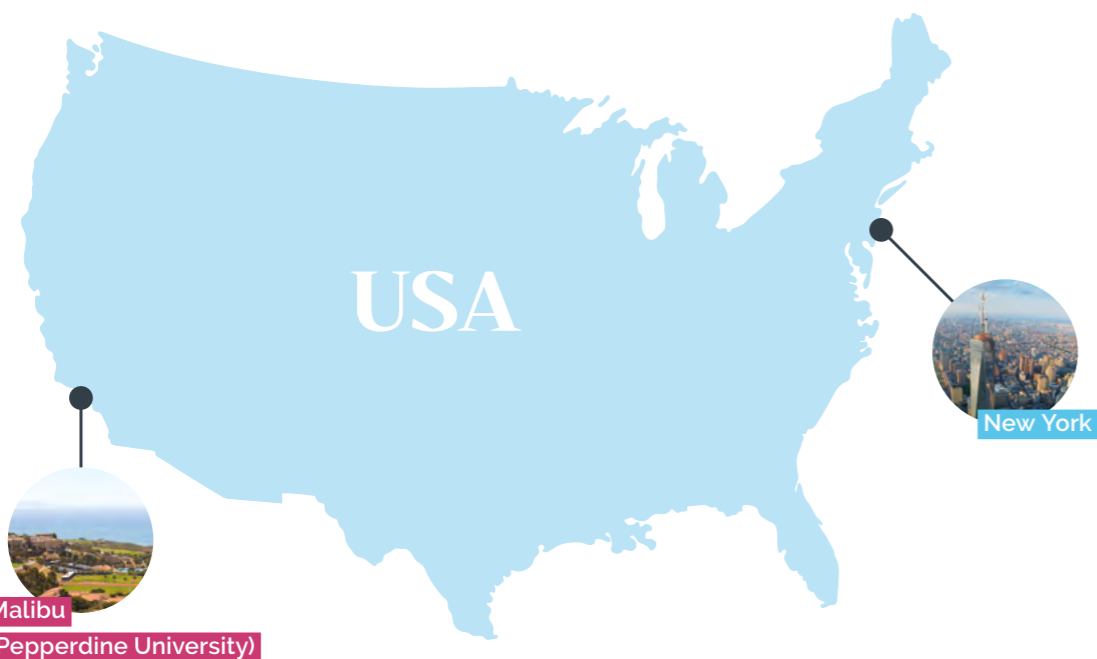
Kings Young Learners

# Your life in English starts with Kings

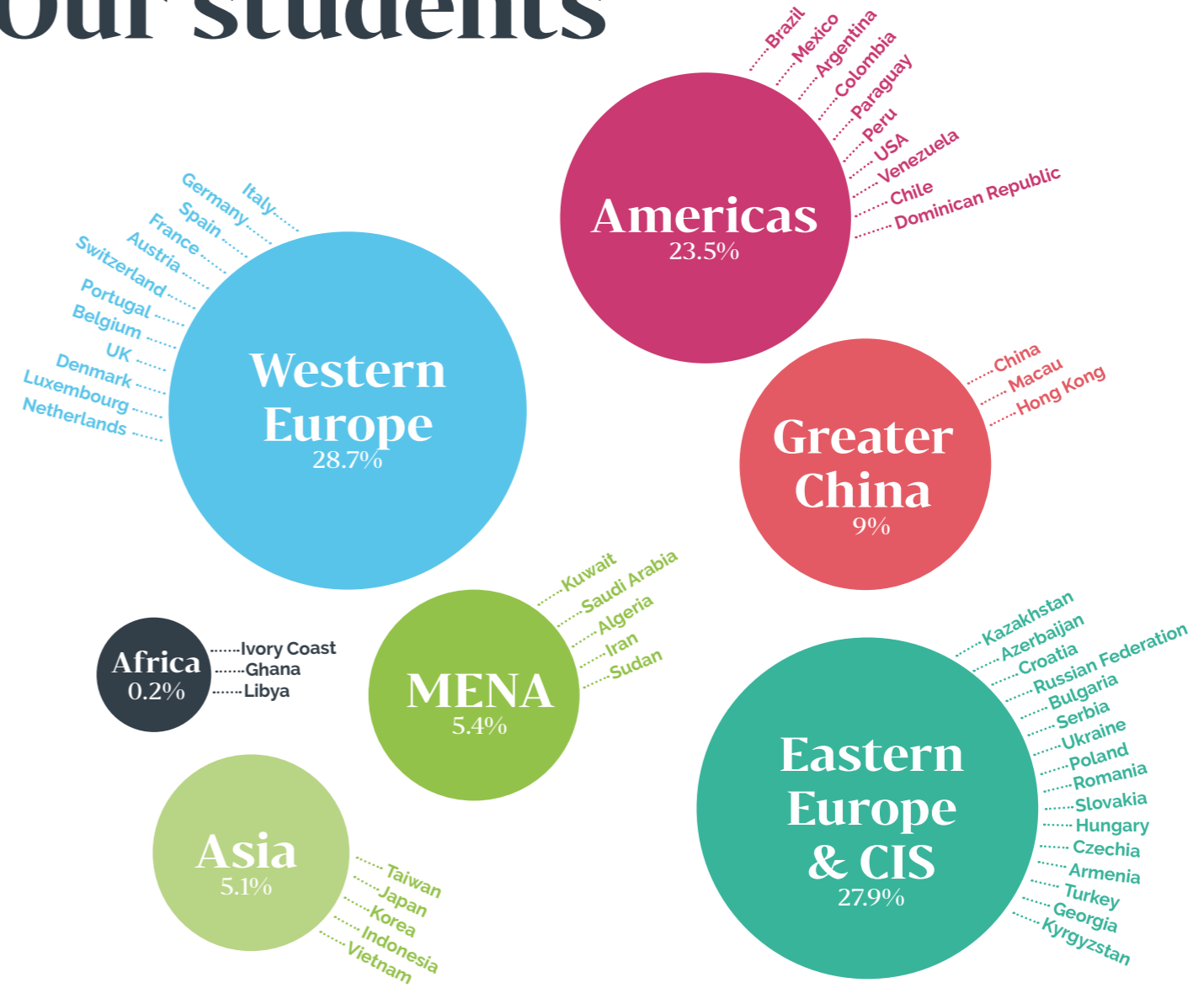
[kingsyounglearners.com](https://kingsyounglearners.com)

# Amazing destinations

## UK / USA



# Our students



# Diversity and inclusion

Each year, our students join us from over 60 different countries. We foster and support intercultural, international friendships at every level. We also theme our English lessons and excursions around important global questions in the world today:

**A World of Difference:** Exploring diversity and different cultures and perspectives.

**A Healthy World:** Assessing how health empowers our students to make informed choices.

**The World Around Us:** Our students are the future guardians of our planet. Our aim is to inspire them to care for it.

**The World of the Future:** What will the world look like in 2050 – and beyond?

From AI to climate change, we explore inventions, emerging technologies, and the skills needed for the world of tomorrow.



# Summer Experience

## Summer Course (Ages 8 – 17)

A learning adventure of English, fun and sightseeing.

## Discover London Discover New York (Ages 16 – 25)

Summer in the city: In English.

## Experience Course (Ages 12 – 17)

A summer of fun for older teenagers.

## Parent & Child (Ages 3 – 7, 8 – 12)

Share your learning adventure together as a family.



Learn more here:  
[kingsyounglearners.com](https://kingsyounglearners.com)



# Summer Academy

## Medical (Ages 15 – 17)

### **Location: Oxford**

For students who want to learn more about the study of medicine and related professions. Ideal preparation for pre-degree programmes.

## Business and Economics (Ages 15 – 17)

### **Location: Oxford**

Experience of UK pre-university education and university options. General English lessons paired with Business and Economics.

## STEM (Ages 15 – 17)

### **Location: Oxford**

Experience of UK pre-university education and university options. General English lessons paired with STEM.

## GCSE Prep (Ages 14 – 16)

### **Location: Bournemouth**

Ideal experience of UK academic education. Combines academic subjects with activities and excursions.

## Leaders of Tomorrow (Ages 14 – 17)

### **Location: University of London**

An innovative course for teenagers who want to improve their communication, soft skills and team building experience. Includes academic visits, a business workshop and the Trinity GESE exam.



Learn more here:  
[kingsyounglearners.com](https://kingsyounglearners.com)



# Year-round

## Study Tours

(Ages 7+)

**Location:** Copthorne, Bath (Downside), Central London (South Bank), Kings Bournemouth, Kings London, Kings Oxford, Kings Boston, Kings New York, Kings Los Angeles

Ideal if you want to:

- Create a study experience tailor-made for your group
- Combine English with an exciting programme of activities and excursions
- Choose a sample programme or build your own

## Spring Programme

(Ages 10 – 17)

**Location:** Bath (Downside)

Perfect if you want your child to:

- Experience boarding school life during the Easter break
- Make international friends
- Enjoy a full programme of activities and excursions with 24/7 supervision



# Explore the world with Kings Study Tours



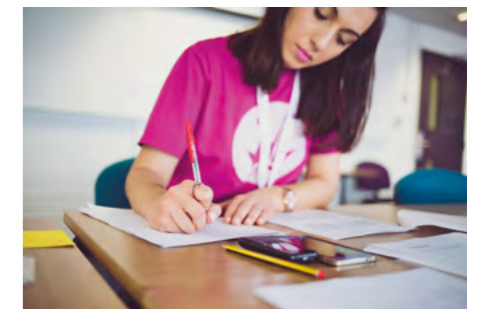
### Flexible programmes to suit every group

Choose from our core Study Tour programme, focused on language learning, with the option to add exciting excursions and activities.



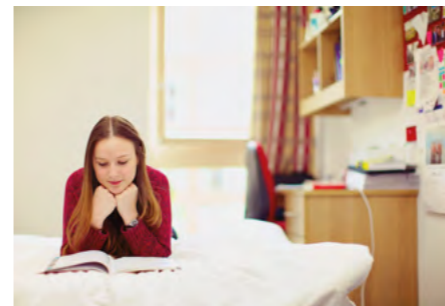
### Unique integration opportunities

Join British students at our Bath and Copthorne (near Gatwick) campuses for a truly immersive educational experience.



### Expertly managed year-round

Our experienced team at Kings supports programmes in the UK & US all year, ensuring students have the best possible experience.



### Accommodation to match every age group

- Younger Students – Residential at Copthorne (7-13) & Bath (10-17)
- Older students – Residential at Bournemouth (12+), Central London Southbank (13+), Los Angeles (14+), New York (16+) & Boston (17+)
- Homestay Options – Available in Bournemouth (12+), Oxford (14+), London Beckenham (14+) & Boston (16+)



### Want something more tailored?

Create a bespoke programme to suit your group's specific interests:

- English Plus Art
- Business English
- Teacher Training
- Academic Writing
- English Plus Management
- English Plus Human Resource Management



Find out more:  
[kingseducation.com/young-learners/year-round-study-tours](https://kingseducation.com/young-learners/year-round-study-tours)

- English Plus Law
- English Plus Fashion & Design
- English Plus Film
- English Outdoors
- **Contact us for further subjects!**

Learn more here:

[kingsyounglearners.com](https://kingsyounglearners.com)





## Kings New York, USA

Our New York Residential Summer Center is located on the safe, attractive campus of the University of Mount Saint Vincent in the neighborhood of Riverdale. Riverdale is green and prosperous yet is just 30 minutes by train from Grand Central Station and the excitement and bustle of New York City. JFK, La Guardia and Newark airports are all less than 1 hour by coach or taxi.



## Malibu, California, USA

Our Malibu Residential Summer Center is situated on the campus of Pepperdine University and offers an ideal, safe environment for young international students. It enjoys a beautiful Californian location at the foot of the Santa Monica Mountains with a fantastic view of the Pacific Ocean. The famous beaches of Los Angeles are a short drive away, while LA's "must see" areas including Hollywood, Beverly Hills and Santa Monica are easily accessible.

### Summer Course

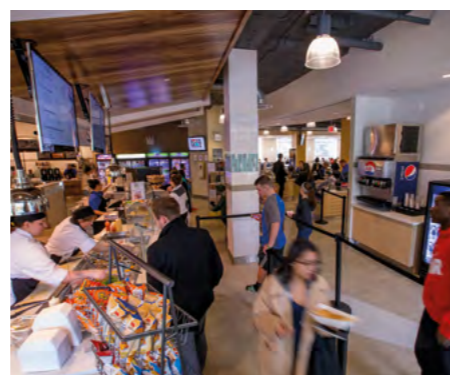
Key Information
<b>Course length:</b> 1 – 4 weeks
<b>Start dates:</b> 28 June, 5, 12, 19, 26 July & 2 August Sunday arrive/Saturday depart
<b>Course ends:</b> 8 August
<b>Lessons:</b> 15 hours of English lessons per week
<b>Minimum age - Maximum age:</b> 12 – 17
<b>Maximum class size:</b> 15
<b>Minimum entry level:</b> Elementary

**On-campus residential accommodation**  
Students stay in twin/triple rooms with air conditioning, sharing bathroom facilities between 6-8 students on average. Girls and boys are in separate accommodation blocks or on separate floors. Please note a deposit of \$100 per student is required on arrival, in case of damages. Lost keys can be charged up to \$250. Towels and toiletries are not included.

### Discover New York

Key Information
<b>Course length:</b> 1 – 2 weeks
<b>Start dates:</b> 28 June, 5, 12, 19, 26 July & 2 August Sunday arrive/Saturday depart
<b>Course ends:</b> 8 August
<b>Lessons:</b> 15 hours of English lessons per week
<b>Minimum age - Maximum age:</b> 16 – 25
<b>Maximum class size:</b> 15
<b>Minimum entry level:</b> Elementary

**Meal plan**  
Breakfast, lunch and dinner are provided every day. Discover New York students have half board with breakfast and lunch. Hot meals are provided in the canteen when on campus while on excursion days students are given money on a cash card to buy lunch on the trip. Some dinners will be off-site depending on the program. We can cater for vegetarian and other dietary requirements on request.



### Summer Course

Key Information
<b>Course length:</b> 1 – 4 weeks
<b>Start dates:</b> 24 June, 1, 8, 15 & 22 July <b>Plus Surfing:</b> 24 June, 1, 8, 15 & 22 July Wednesday arrival / Tuesday departure
<b>Course ends:</b> 28 July
<b>Lessons:</b> 15 hours of English lessons per week
<b>Minimum age - Maximum age:</b> 10 – 17 (8+ as part of a group)
<b>Plus Surfing:</b> 13 – 17
<b>Maximum class size:</b> 15
<b>Minimum entry level:</b> Elementary

*\*students taking the surfing course must be able to swim*  
*\*students' parent/guardian must sign a liability waiver provided by the surf school, as per standard practice in the US*  
*\*surf lessons may be rescheduled or cancelled in the event of inclement weather/unsafe ocean conditions*

#### On-campus residential accommodation

On-campus residential accommodation with separate areas for boys and girls. Accommodation is mainly in twin rooms and with shared bathrooms (ratio 1:4).

Please note a deposit of \$100 per student is required on arrival, in case of damages. Lost keys can be charged up to \$75. One towel included but no toiletries.

#### Meal plan

Breakfast, lunch and dinner are provided every day. Hot meals are provided in the canteen when on campus while on excursion days students are given money on a cash card to buy lunch while on the trip. Some dinners will be off-site depending on the program. We can cater for vegetarian and other dietary requirements on request.



### Sample timetable - Summer Course

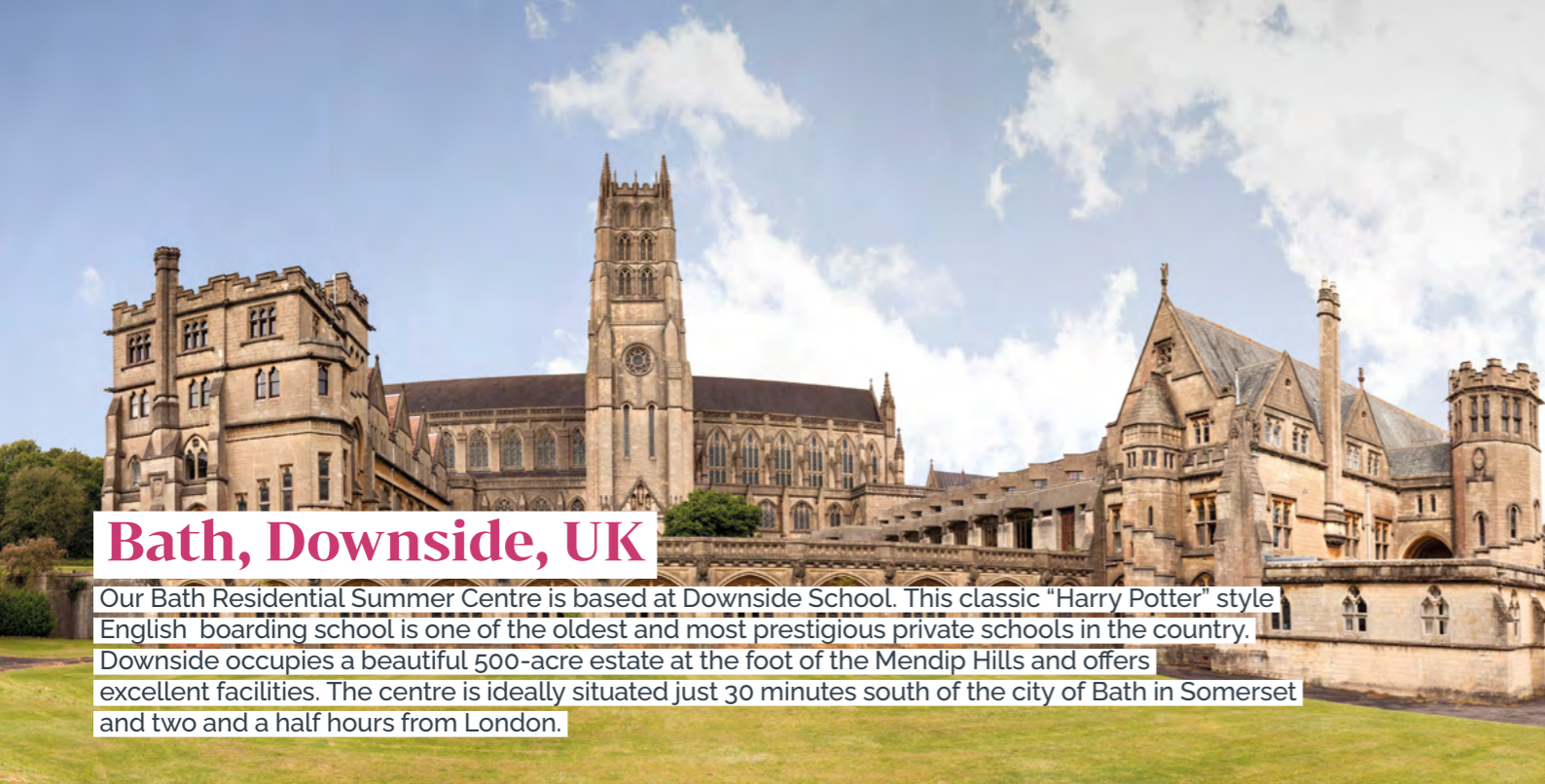
	Sunday	Monday	Tuesday	Wednesday	Thursday	Friday	Saturday
<b>Morning</b>	Arrivals or Coney Island	Book-based / Project-based lessons	<b>New Students:</b> Manhattan Sightseeing Tour	Book-based / Project-based lessons	Statue of Liberty & Ellis Island	Book-based / Project-based lessons	Departures or Grande Central Terminal & 5th Avenue Walking Tour
<b>Afternoon</b>		Lunch	<b>Existing Students:</b> Brooklyn Bridge & One World Observatory/ Ground Zero	Lunch		Lunch	
<b>Evening</b>	Ice Breakers	Welcome Party	Sports Tournament	Dinner	Movie Night	Disco	(dinner in Times Sq)

The above is a SAMPLE timetable and Kings reserves the right to make alterations to it as/when necessary

### Sample timetable

	Wednesday	Thursday	Friday	Saturday	Sunday	Monday	Tuesday
<b>Morning</b>	Arrivals or Camarillo Premium Outlets	Book-based / Project-based lessons	Santa Barbara 'Surfing	Book-based / Project-based lessons	Beverly Hills & Natural History Museum	Book-based / Project-based lessons	Departures or Universal Studios (dinner off-site)
<b>Afternoon</b>		Lunch		Lunch		Lunch	
<b>Evening</b>	Ice Breakers	Welcome Party	Sports Tournament	Dinner	Scavenger Hunt	Disco	

\*These activities are only available to Summer Course Plus students and must be pre-booked for a supplement  
The above is a SAMPLE timetable and Kings reserves the right to make alterations to it as/when necessary



## Bath, Downside, UK

Our Bath Residential Summer Centre is based at Downside School. This classic "Harry Potter" style English boarding school is one of the oldest and most prestigious private schools in the country. Downside occupies a beautiful 500-acre estate at the foot of the Mendip Hills and offers excellent facilities. The centre is ideally situated just 30 minutes south of the city of Bath in Somerset and two and a half hours from London.



## Berkshire, Downe House, UK

Downe House School is a traditional boarding school built with a modern twist. The amazing sports, social and residential facilities are tastefully built around traditional old chapels and cloisters. The school is in the heart of Berkshire, only 45 minutes from Heathrow and 1 hour 30 minutes from central London. The school is ideally located to see the capital.

### Summer Course

Key Information
<b>Course length:</b> 1 – 4 weeks
<b>Start dates:</b> 1, 8, 15, 22 & 29 July
<b>Plus Tennis:</b> 1, 8, 15, 22 & 29 July
<b>Plus Horse Riding:</b> 1, 8, 15, 22 & 29 July Wednesday arrive/Wednesday depart
<b>Course ends:</b> 5 August
<b>Lessons:</b> 15 hours of English per week
<b>Minimum age - Maximum age:</b> 8 – 12, 13 – 17 (Separate classes / activities for each age group)
Plus Tennis: 13 – 17
Plus Horse Riding: 8 – 12, 13 – 17
<b>Maximum class size:</b> 15
<b>Minimum entry level:</b> Elementary

#### On-campus residential accommodation

Mix of single, twin and multibedded rooms with communal bathroom facilities. Mix of traditional accommodation embedded in the stunning main quad in addition to separate and self-contained boarding houses.

The student bathroom ratio is approximately 6:1 in each boarding house; boys and girls are housed in different accommodation areas / boarding houses and each area is supervised by Kings residential staff.

Please note a deposit of £50 per student is required on arrival, in case of damages. Towels and toiletries are not included.

#### Meal plan

Breakfast, lunch and dinner every day. Lunch and dinner are usually hot (with packed lunches on excursion days) and there is usually a choice of at least two main courses. We can cater for vegetarian and other dietary requirements on request.



### Summer Course

Key Information
<b>Course length:</b> 1 – 4 weeks <i>(2-week set length for Harry Potter course)</i>
<b>Start dates:</b> 12, 19, 26 July, 2 & 9 August
<b>Plus Golf:</b> 12, 19, 26 July, 2 & 9 August
<b>Plus Harry Potter:</b> 12 - 26 July or 26 July – 9 Aug, Sunday arrive/Sunday depart
<b>Course ends:</b> 16 August
<b>Lessons:</b> 15 hours of English per week
<b>Minimum age - Maximum age:</b> 10 – 17
<b>Maximum class size:</b> 15
<b>Minimum entry level:</b> Beginner

#### On-campus residential accommodation

Stunning modernised residential boarding houses each with twin, triple and quad rooms (few singles) with shared bathrooms on a ratio of 1:4.

Each house has its own individualised large common room area where students can hang out in the evenings.

Please note a deposit of £50 per student is required on arrival, in case of damages. Towels and toiletries are not included.

#### Meal plan

Breakfast, lunch and dinner are supplied every day. Lunch and dinner are usually hot (with packed lunches on excursion days) and there is usually a choice of at least two main courses.

We can cater for vegetarian and other dietary requirements on request.



### Sample timetable

	Wednesday	Thursday	Friday	Saturday	Sunday	Monday	Tuesday
<b>Morning</b>	Arrivals/ Departures or Cardiff with Cardiff Castle	Book-based / Project-based lessons	Book-based / Project-based lessons	Book-based / Project-based lessons	Book-based / Project-based lessons	Book-based / Project-based lessons	Oxford, inc. Walking Tour & Shopping
<b>Afternoon</b>		Cookery Swimming *Tennis *Horse Riding	Bath & Roman Baths	Bristol Walking Tour & Shopping	Football Dodgeball Zumba Basketball	Arts and crafts Swimming *Tennis *Horse Riding	or London overnight stay for leavers
<b>Evening</b>	Games night	Fancy dress night	Quiz night	Scavenger Hunt	Talent Show	Disco	Movie night

\*These activities are only available to Summer Course Plus students and must be pre-booked for a supplement. The above is a SAMPLE timetable and Kings reserves the right to make alterations to it as/when necessary.

### Sample timetable

	Sunday	Monday	Tuesday	Wednesday	Thursday	Friday	Saturday
<b>Morning</b>	Arrivals/ Departures or Warwick Castle	Book-based / Project-based lessons	Book-based / Project-based lessons	Book-based / Project-based lessons	London, inc. British Museum, Regent's Park & Oxford Street	Book-based / Project-based lessons	Book-based / Project-based lessons
<b>Afternoon</b>	or *Oxford Harry Potter Tour & College Visits (Packed Lunch)	Activities *Harry Potter *Golf	Newbury shopping	Activities	or *Warner Bros Studios	Activities *Golf	Cotswold Wildlife Park
<b>Evening</b>	Games night	Fancy dress night	Quiz night	Scavenger Hunt	Talent Show	Disco	Movie night

\*These activities are only available to Summer Course Plus students and must be pre-booked for a supplement. The above is a SAMPLE timetable and Kings reserves the right to make alterations to it as/when necessary.



## Ascot, St. Mary's, UK

Our Ascot Residential Summer Centre is based at St Mary's School. This traditional English boarding school was built in the 19th century and has grown into one of the finest boarding schools in the country. Set in 55 acres of beautiful grounds in the heart of Berkshire, with excellent boarding facilities, sports and performing arts facilities, the school is conveniently located in the little town of Ascot, a short journey away from Heathrow airport, Windsor Castle and 25 miles west of London.

### Summer Course

Key Information
<b>Course length:</b> 1 – 4 weeks
<b>Start dates:</b> 8, 15, 22, 29 July & 5 August Wednesday arrive/Wednesday depart
<b>Course ends:</b> 12 August
<b>Lessons:</b> 15 hours of English per week
<b>Minimum age - Maximum age:</b> 10 – 17
<b>Maximum class size:</b> 15
<b>Minimum entry level:</b> Elementary

#### On-campus residential accommodation

Traditional, well-kept boarding school accommodation with single, twin and multi-bedded (3-8) rooms with communal bathrooms. Limited modern single en-suite accommodation available at a supplement (requires pre-booking).

The student:bathroom ratio is between 4:1 & 6:1 and each room has a sink; boys and girls are housed in different accommodation areas and each area is supervised by Kings residential staff.

Please note a deposit of £50 per student is required on arrival, in case of damages. Towels and toiletries are not included.



#### Meal plan

Breakfast, lunch and dinner every day. Lunch and dinner are usually hot (with packed lunches on excursion days) and there is usually a choice of at least two main courses. We can cater for vegetarian and other dietary requirements on request.

### Sample timetable

	Wednesday	Thursday	Friday	Saturday	Sunday	Monday	Tuesday
<b>Morning</b>	Arrivals/ Departures	Book-based / Project-based lessons	Football Arts & Crafts Tennis	Book-based / Project-based lessons	<b>New Students:</b> London Westminster Walking Tour & Leicester Square	Book-based / Project-based lessons	London, inc. Madame Tussauds & Covent Garden
<b>Afternoon</b>	Londo, inc. St. Paul's Cathedral, Tate Modern & Borough Market	Lunch  Basketball Dance Swimming	Lunch  Bracknell Shopping	Lunch  Book-based / Project-based lessons	<b>Existing Students:</b> Natural History Museum & Hyde Park	Lunch  Book-based / Project-based lessons	(Packed Lunch)
<b>Evening</b>	(Packed Lunch) Games night	Fancy dress night	Quiz Night	Dinner Scavenger Hunt	Talent Show	Disco	Movie night

The above is a SAMPLE timetable and Kings reserves the right to make alterations to it as/when necessary



## Moreton Hall, Shropshire, UK

Our Residential Summer Centre is based at Moreton Hall, a highly prestigious school occupying impressive buildings set in 100 acres of beautiful parkland. The school has excellent facilities for learning and sports. It is located near the town of Oswestry on the border of England and Wales and is only an hour from Manchester, Liverpool and Birmingham.

### Parent & Child Course

Key Information
<b>Course length:</b> 1 – 4 weeks
<b>Start dates:</b> 5, 12, 19, 26 July, 2 & 9 August Sunday arrival / Sunday departure
<b>Course ends:</b> 16 August
<b>Lessons:</b> 15 hours of English per week (Children) 12 hours of English per week (Parent)
<b>Minimum age - Maximum age:</b> 3 – 7, 8 – 12
<b>Maximum class size:</b> 15 (Children) / 12 (Parent)
<b>Minimum entry level:</b> Beginner

The summer centre at Moreton Hall is run by Ofsted-inspected private school, Moreton Hall.

#### On-site residence

Moreton Hall offers comfortable on-campus residential accommodation with twin and triple rooms with en suite shower room. Parents and children share together.

#### Meal plan

Breakfast, lunch and dinner provided every day. Lunch and dinner are usually hot (with packed lunches on excursion days), and there is also a cold buffet option. We can cater for vegetarian and other dietary



### Sample timetable

	Sunday	Monday	Tuesday	Wednesday	Thursday	Friday	Saturday
<b>Morning</b>	Arrivals/ Departures or	English Lessons	English Lessons	English Lessons	English Lessons	English Lessons	Manchester
<b>Afternoon</b>	Optional Sunday trip (supplement applies)	Holiday Club	Holiday Club	Attingham Park Lunch	Holiday Club	Holiday Club	
<b>Evening</b>	Orientation Talk	Team Building	Treasure Hunt	Dinner Rounders	International Night	Film Night	Free Time



## Central London, South Bank, UK

Our Central London Residential Summer Centre is based at London's South Bank University. Enjoying a superb location right in the heart of the city, it offers modern facilities and single en suite accommodation with spectacular views of the Shard and the London Eye.



## Central London, University of London, UK

Based in the historic district of Bloomsbury at the University of London, our UoL centre is truly at the heart of London. Boasting modern facilities and multiple accommodation options, this fantastic location next to Russell Square and King's Cross/St Pancras is exceptionally well-connected with great public transport links.

### Summer Course

Key Information
<b>Course length:</b> 1 – 4 weeks
<b>Start dates:</b> 24 June, 1, 8, 15, 22, 29 July, 5 & 12 August. Wednesday arrive/Wednesday depart
<b>Course ends:</b> 19 August
<b>Lessons:</b> 15 hours of English per week
<b>Minimum age - Maximum age:</b> 13 – 17
<b>Maximum class size:</b> 15
<b>Minimum entry level:</b> Elementary

#### On-campus residential accommodation

David Bomberg and McLaren House are 5 minutes' walk away from the main campus. All rooms are single with private bathrooms arranged into flats, with 5 – 8 rooms per flat.

*Discover London (DL):  
Excursions and activities in pink are optional extras and can be purchased on-site.*

### Discover London

Key Information
<b>Course length:</b> 1 – 4 weeks
<b>Start dates:</b> 1, 8, 15, 22, 29 July, 5 & 12 August. Wednesday arrive/Wednesday depart
<b>Course ends:</b> 19 August
<b>Lessons:</b> 15 hours of English per week
<b>Minimum age - Maximum age:</b> 16 – 25
<b>Maximum class size:</b> 15
<b>Minimum entry level:</b> Elementary

Each flat shares a common room/kitchen (kitchens not to be used for cooking).

Please note a deposit of £50 per student is required on arrival, in case of damages. Lost keys can be charged up to £180. Towels and toiletries are not included.



#### Meal plan

Breakfast, lunch and dinner every day. Discover London students have half board with breakfast and lunch. Lunch and dinner are usually hot (with packed lunches or a cash card on full-day excursions) and there is usually a choice of at least two main courses. We can cater for vegetarian and other dietary requirements on request.

### Summer Course (SC)

Key Information
<b>Course length:</b> 1 – 4 weeks
<b>Start dates:</b> 1, 8, 15, 22, 29 July Wednesday arrive/Wednesday depart
<b>Course ends:</b> 5 August
<b>Lessons:</b> 15 hours of English per week
<b>Minimum age - Maximum age:</b> 12 – 17
<b>Maximum class size:</b> 15
<b>Minimum entry level:</b> Elementary

#### On-campus residential accommodation

International Hall is a large building which contains accommodation, dining facilities and a number of social and recreation rooms as well as an internal courtyard.

Bedrooms are either single with a private bathroom and a mini-fridge or single with shared bathroom facilities (ratio ~ 1:4) and access to a shared kitchenette (no cooking).

### Discover London

Key Information
<b>Course length:</b> 1 – 4 weeks
<b>Start dates:</b> 1, 8, 15, 22, 29 July Wednesday arrive/Wednesday depart
<b>Course ends:</b> 5 August
<b>Lessons:</b> 15 hours of English per week
<b>Minimum age - Maximum age:</b> 16 – 25
<b>Maximum class size:</b> 15
<b>Minimum entry level:</b> Elementary

Please note a deposit of £50 per student is required on arrival, in case of damages. Lost keys cost £20 each to replace. One towel included but no toiletries.

#### Meal plan

SC & LoT students will have full board with breakfast and dinner provided at the residence. Lunch money will be provided on prepaid cash cards.

### Leaders of Tomorrow (LoT)

Key Information
<b>Course length:</b> 2 weeks
<b>Start dates:</b> 8 – 22 July. Wednesday arrive/Wednesday depart
<b>Course ends:</b> 22 July – 5 August
<b>Lessons:</b> 20 hours of English for Academic Purposes, Social Skills & Vocational development per week
<b>Minimum age - Maximum age:</b> 14 – 17
<b>Maximum class size:</b> 12
<b>Minimum entry level:</b> Intermediate <i>(Pre-test required)</i>

Please refer to our full course factsheet and timetable for more details on LoT.

DL students will have a half board option with breakfast at the residence and lunch money on prepaid cash cards. We can cater for vegetarian and other dietary requirements on request.

### Sample timetable

	Wednesday	Thursday	Friday	Saturday	Sunday	Monday	Tuesday
<b>Morning</b>	Arrivals/ Departures or	English lessons	English lessons	English lessons	English lessons	English lessons	SC: Oxford, inc. Walking Tour & Punting
<b>Afternoon</b>	SC: Canterbury, inc. Cathedral  DL: Canterbury, inc. Cathedral  (Packed Lunch)	SC: Imperial War Museum  DL: Tate Modern	SC: Tower of London  DL: London Eye	SC: Victoria & Albert Museum  DL: Frameless	SC: Spitafields & Brick Lane Markets  DL: Westminster Abbey	SC: Sports  DL: Tower of London	DL: Cambridge, inc. Pembroke College  (Packed lunch)
<b>Evening</b>	Activities	Activities DL: Activities	Activities	Activities DL: Activities	Activities	Activities	Activities DL: Activities

The above is a SAMPLE timetable and Kings reserves the right to make alterations to it as/when necessary

### Sample timetable - Summer Course & Discover London

	Wednesday	Thursday	Friday	Saturday	Sunday	Monday	Tuesday
<b>Morning</b>	Arrivals/ Departures or	English lessons	English lessons	English lessons	English lessons	English lessons	SC: Hastings, inc. Walking Tour & Tea Museum
<b>Afternoon</b>	SC: Canterbury, inc. Cathedral  DL: Canterbury, inc. Cathedral  (Packed Lunch)	SC: Victoria & Albert Museum  DL: London Museum	SC: Tower of London  DL: Thames River Cruise	SC: Imperial War Museum  DL: Frameless	SC: Spitafields & Brick Lane Markets  DL: London Zoo	SC: Sports  DL: Churchill's War Rooms	DL: Hastings, inc. Walking Tour, Tea & Afternoon Tea  (Packed lunch)
<b>Evening</b>	Activities	Activities DL: Activities	Activities	Activities DL: Activities	Activities	Activities	Activities DL: Activities

The above is a SAMPLE timetable and Kings reserves the right to make alterations to it as/when necessary



## Kings Bournemouth, UK

With miles of beautiful sandy beaches, lovely parks and gardens, and plenty of amazing excursion destinations within easy reach, Bournemouth is the perfect vacation location for older teenagers. Our Summer Centre is close to the town centre and beach. There are excellent facilities at the Centre, plus easy access to nearby accommodation.

### Experience Bournemouth

Key Information
<b>Course length:</b> 1 – 4 weeks <i>(3 weeks max if in homestay)</i>
<b>Start dates:</b> 14, 21, 28 June, 5, 12, 19, 26 July, 2 & 9 August Sunday arrive/Sunday depart.
<b>Course ends:</b> 16 August
<b>Lessons:</b> 15 hours of English per week
<b>Minimum age - Maximum age:</b> 12 – 17
<b>Maximum class size:</b> 15
<b>Minimum entry level:</b> Elementary

#### Off-site residence (Charminster)

Charminster residence is located at a 20 minutes' walk from Summer Centre. Accommodation is arranged in single en-suite rooms. Students are supervised by Kings residential wardens and internet access is available throughout the residence. Under 16's receive a room key only and not a main door fob.

### Summer Academy: GCSE Prep

Key Information
<b>Course length:</b> 1 – 3 weeks
<b>Start dates:</b> 12, 19, 26 July Sunday arrive/Sunday depart.
<b>Course ends:</b> 2 August
<b>Lessons:</b> 15 hours of academic subjects per week
<b>Minimum age - Maximum age:</b> 14 – 16
<b>Maximum class size:</b> 12
<b>Minimum entry level:</b> Intermediate <i>(Pre-test required)</i>

#### Homestay

Our selected homestays are a bus ride from the centre (usually 25 - 30 minutes.) Accommodation is arranged in standard twin rooms with shared bathroom facilities (single rooms available on request – supplement applies). All families are carefully selected and inspected by the Kings Accommodation Manager.



#### Meal Plan

Breakfast, lunch and dinner every day. Lunch is a combination of hot lunches and packed lunches. We can cater for vegetarian and other dietary requirements on special request. (a supplement may apply)



## Kings London, Beckenham, UK

What better location for older teenagers to enjoy a fantastic summer than London, one of the world's great cities. Our London Summer Centre is based at our year round college, Kings London, in the affluent suburb of Beckenham. Beckenham is a safe, attractive and green suburb in southeast London just 20 minutes by train into Central London.

### Experience London

Key Information
<b>Course length:</b> 1 – 3 weeks
<b>Start dates:</b> 28 June, 5, 12, 19, 26 July Sunday arrive/Sunday depart.
<b>Course ends:</b> 2 August
<b>Lessons:</b> 15 hours of English lessons per week
<b>Minimum age - Maximum age:</b> 14 – 17
<b>Maximum class size:</b> 15
<b>Minimum entry level:</b> Elementary

#### Homestay

Our selected homestays are at walking distance or short bus ride from the centre. Students make their way to/from the centre. Accommodation is arranged in standard twin rooms with shared bathroom facilities (single rooms available on request – supplement applies).

All families are carefully selected and inspected by our Accommodation Manager.

#### Meal Plan

Breakfast, lunch and dinner every day. Lunch is a combination of hot lunches and packed lunches. We can cater for vegetarian and other dietary requirements on special request (a supplement may apply.)



### Sample timetable

	Sunday	Monday	Tuesday	Wednesday	Thursday	Friday	Saturday
<b>Morning</b>	Arrivals/ Departures	English Lessons GCSE Prep*	English Lessons GCSE Prep*	English Lessons GCSE Prep*	English Lessons GCSE Prep*	English Lessons GCSE Prep*	London & London Eye
<b>Afternoon</b>	Optional Excursion	Activities	Salisbury & Cathedral	Activities	Lulworth Cove	Activities	
<b>Evening</b>	Free Evening	Activities	Free Evening	Free Evening	Free Evening	Activities	

The above is a SAMPLE timetable and Kings reserves the right to make alterations to it as/when necessary

### Sample timetable

	Sunday	Monday	Tuesday	Wednesday	Thursday	Friday	Saturday
<b>Morning</b>	Arrivals/ Departures	English Lessons	English Lessons	English Lessons	English Lessons	English Lessons	Brighton & Sea Life Centre
<b>Afternoon</b>	Optional Excursion	Mini Golf	London West End	Greenwich & Cable Car (extended half-day)	Camden Market	Natural History Museum & Hyde Park	
<b>Evening</b>	Free Evening	Social Evening	Free Evening	Late Return	Free Evening	Music Night	

The above is a SAMPLE timetable and Kings reserves the right to make alterations to it as/when necessary



## Kings Oxford, UK

Our City Summer Centre in Oxford takes place at Kings' year-round campus for academic preparation, St. Josephs. Here, students have access to a range of on-site facilities, including a large student cafeteria, an outside patio, and large well-equipped classrooms and resource areas. St. Josephs is located in the vibrant student area of Cowley, which means that there are also a range of public amenities right on the doorstep.

### Our Summer Academy Courses:

#### Business and Economics

Key Information
<b>Course length:</b> 2 or 4 weeks
<b>Start dates:</b> 28 June for 2 or 4-week bookings 12 July for 2-week bookings Sunday arrive/Sunday depart
<b>Course ends:</b> 26 July
<b>Lessons:</b> 17 hours of Business and Economics and 10 hours of English, UCAS counselling and culture per week
<b>Minimum age - Maximum age:</b> 15 – 17
<b>Maximum class size:</b> 12
<b>Minimum entry level:</b> IELTS 5.0 / Intermediate <i>(pre-test required)</i>

#### Off-site residence

##### Wavy Gate (all courses)

Wavy Gate is located 25 minutes' walk away from the centre or a short bus ride. All rooms are single en-suite study bedrooms with shared kitchen/sitting room facilities. Laundry facilities are available on-site (students will have to register and pay online). Supervision is guaranteed by an on-site warden 24/7.

#### STEM

Key Information
<b>Course length:</b> 2 or 4 weeks
<b>Start dates:</b> 28 June for 2 or 4-week bookings 12 July for 2-week bookings Sunday arrive/Sunday depart
<b>Course ends:</b> 26 July
<b>Lessons:</b> 17 hours of STEM and 10 hours of English, UCAS counselling and culture per week
<b>Minimum age - Maximum age:</b> 15 – 17
<b>Maximum class size:</b> 12
<b>Minimum entry level:</b> IELTS 5.0 / Intermediate <i>(pre-test required)</i>

#### Meal plan

Full-board is offered with breakfast and lunch at the St. Joseph's Hall Campus + dinner at Wavy Gate or using meal vouchers. Hot/cold breakfast, cooked lunch and cold dinner are provided every day (total of 20 meals per week). The on-site canteen is open 08.00 to 15.00, should students wish to purchase additional food/drinks.

#### Medical

Key Information
<b>Course length:</b> 2 weeks
<b>Start dates:</b> 28 June Sunday arrive/Sunday depart
<b>Course ends:</b> 12 July
<b>Lessons:</b> 18 hours of Medical related subjects and 6 hours of English, UCAS counselling and culture per week
<b>Minimum age - Maximum age:</b> 15 – 17
<b>Maximum class size:</b> 8-12
<b>Minimum entry level:</b> IELTS 5.0 <i>(or equivalent)</i>

Please refer to our full course factsheets and timetables for more details on our Summer Academy courses offered in Oxford.



# Safety and care

Kings UK centres are accredited by the British Council and we are active members of the special interest group Young Learners English UK. We are subject to rigorous inspections to ensure the highest level of quality, safety, and care.

Student welfare and safety are always our top priorities at Kings Young Learners. We understand and acknowledge the trust that you put in us when you send your child to the UK or to the USA to study. We are their family away from home.

Our locations have all been selected for their safe and secure environments, and we offer only the highest levels of supervision. The presence of our welfare managers, night supervisors, hall managers and/or house parents supports the safety and comfort of your child whilst they are in our care.

Accredited by the  
**BRITISH COUNCIL**  
for the teaching of English in the UK



**To ensure students are safe at all times, the following measures are in place:**

- Students are all issued with ID cards and wristbands with emergency contact information.
- A 24-hour emergency phone service for students, staff and parents is in place.
- Child safeguarding is an integral part of staff training.
- We have strict recruitment procedures, and all staff are hired subject to suitable references and background checks.
- Homestay providers and residence supervisors are responsible for students at their accommodation and ensure that curfews are followed every night.
- At the Residential Summer Centres, House Parents or Night Supervisors monitor the halls of residence throughout the nighttime period.
- Individual students at the Residential Summer Centres are allocated a staff member to act as their guardian during their stay. They will have a daily meeting throughout their stay.
- Teachers take attendance registers at the start of every lesson and registers are taken on activities and excursions.
- There is a designated Welfare Manager at each of our locations.
- Staff to student ratios are excellent at approximately 1:6.



You can read our full welfare and safety procedures here:  
[kingseducation.com/young-learners/factsheets/policies](https://kingseducation.com/young-learners/factsheets/policies)

## Admissions contact details

### **Kings Young Learners**

The Old Market,  
Upper Market Street,  
Hove, BN3 1AS

**T** +44 (0) 1273 917166

**E** [younglearners@kingseducation.com](mailto:younglearners@kingseducation.com)

Check out our website:

[kingsyounglearners.com](http://kingsyounglearners.com)

Follow us on Instagram:



**Kings**  
Education for Life